

Welded Quilt Pattern



Finished Size: 61" x 79 1/2"

Fabric Requirements:

2 1/8 yards ART-43107		Fabrics A to E (includes binding)
1/2 yard ART-43108		Fabrics F & G
1/2 yard ART-53104		Fabrics H to K
1/2 yard ART-53106		Fabrics H to K
1/2 yard ART-43105		Fabrics H to K
1/2 yard ART-53108		Fabrics H to K
5/8 yard ART-43106		Fabrics L & M
2 yards ART-43101		Fabric N
3/4 yard ART-43103		Fabrics O, P & Q
5 yards ART-43100		Backing



1-866-826-2069

www.FatQuarterShop.com

www.YouTube.com/FatQuarterShop

The Welded Quilt is made from the Artisan collection by Pat Bravo for Art Gallery Fabrics.

Cutting:

Cut ART-43107 fabric into:

- 6 - 3 1/2" x 11 1/2" rectangles (A)
- 18 - 3 1/2" x 10 1/2" rectangles (B)
- 6 - 3 1/2" x 7 1/2" rectangles (C)
- 18 - 3 1/2" x 4 1/2" rectangles (D)
- 8 - 2 1/2" x width of fabric strips (E) (binding)



Cut ART-43108 fabric into:

- 6 - 6 1/2" squares (F)
- 9 - 4 1/2" squares (G)



Cut ART-53104 fabric into:

- 3 - 3 1/2" x width of fabric strips and subcut into:
- 2 - 3 1/2" x 11 1/2" rectangles (H)
- 4 - 3 1/2" x 10 1/2" rectangles (I)
- 2 - 3 1/2" x 7 1/2" rectangles (J)
- 4 - 3 1/2" x 4 1/2" rectangles (K)



Cut ART-53106 fabric into:

- 3 - 3 1/2" x width of fabric strips and subcut into:
- 2 - 3 1/2" x 11 1/2" rectangles (H)
- 4 - 3 1/2" x 10 1/2" rectangles (I)
- 2 - 3 1/2" x 7 1/2" rectangles (J)
- 4 - 3 1/2" x 4 1/2" rectangles (K)



Cut ART-43105 fabric into:

- 3 - 3 1/2" x width of fabric strips and subcut into:
- 2 - 3 1/2" x 11 1/2" rectangles (H)
- 4 - 3 1/2" x 10 1/2" rectangles (I)
- 2 - 3 1/2" x 7 1/2" rectangles (J)
- 4 - 3 1/2" x 4 1/2" rectangles (K)



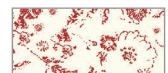
Cut ART-53108 fabric into:

- 3 - 3 1/2" x width of fabric strips and subcut into:
- 2 - 3 1/2" x 11 1/2" rectangles (H)
- 4 - 3 1/2" x 10 1/2" rectangles (I)
- 2 - 3 1/2" x 7 1/2" rectangles (J)
- 4 - 3 1/2" x 4 1/2" rectangles (K)



Cut ART-43106 fabric into:

- 8 - 6 1/2" squares (L)
- 8 - 4 1/2" squares (M)



Cut ART-43101 fabric into:

- 48 - 4 1/2" x 10 1/2" rectangles (N)



Cut ART-43103 fabric into:

- 2 - 6 1/2" squares (O)
- 12 - 4 1/2" x 6 1/2" rectangles (P)
- 18 - 4 1/2" squares (Q)



Welded Quilt Pattern



Use 1/4" seams and press as arrows indicate throughout.

Block Assembly:

Assemble two Fabric D rectangles and one Fabric G square.

Blue Welded Unit should measure 4 1/2" x 10 1/2".

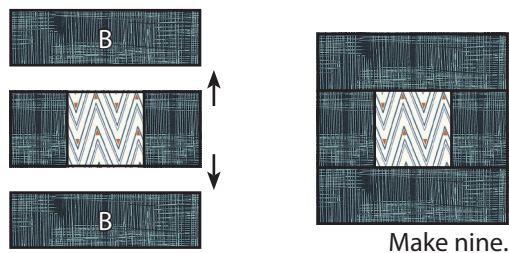
Make nine.



Assemble two Fabric B rectangles and one Blue Welded Unit.

Blue Welded Block should measure 10 1/2" x 10 1/2".

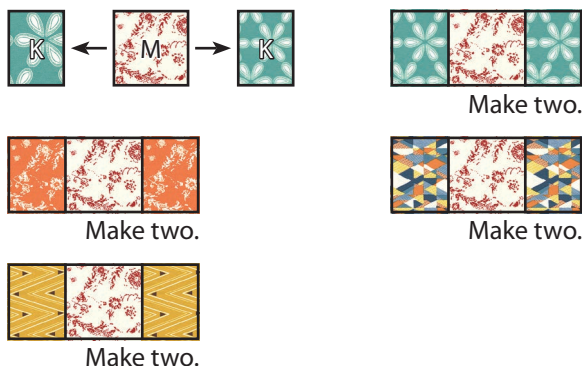
Make nine.



Assemble two matching Fabric K rectangles and one Fabric M square.

Color Welded Unit should measure 4 1/2" x 10 1/2".

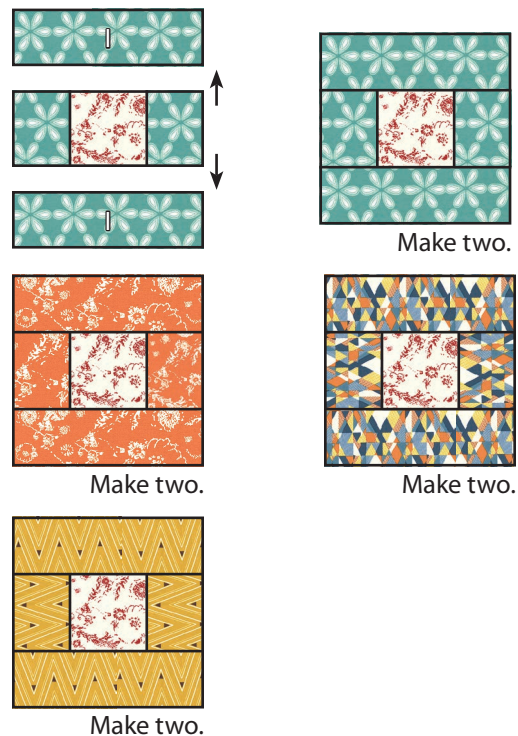
Make eight total.



Assemble two matching Fabric I rectangles and one matching Color Welded Unit.

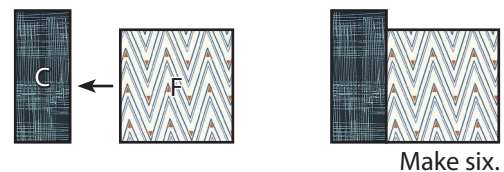
Color Welded Block should measure 10 1/2" x 10 1/2".

Make eight total.



Assemble one Fabric C rectangle and one Fabric F square.

Make six Partial Blue Welded Units.



Assemble one Partial Blue Welded Unit and one Fabric A rectangle.

Make six Half Blue Welded Blocks.

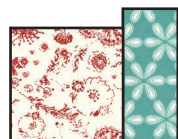
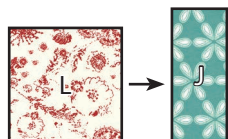


Welded Quilt Pattern

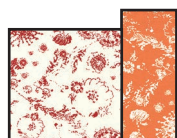


Assemble one Fabric L square and one Fabric J rectangle.

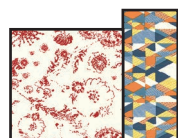
Make eight Partial Color Welded Units total.



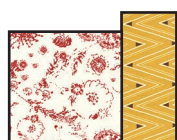
Make two.



Make two.



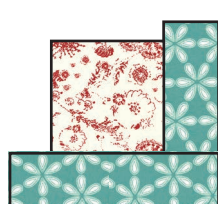
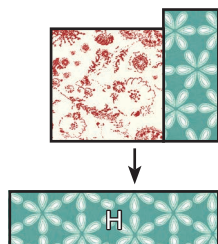
Make two.



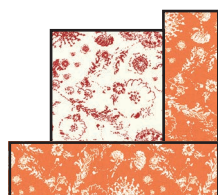
Make two.

Assemble one Partial Color Welded Unit and one matching Fabric H rectangle.

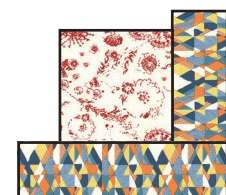
Make eight Half Color Welded Blocks total.



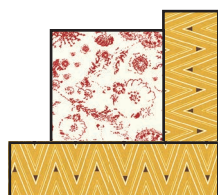
Make two.



Make two.



Make two.

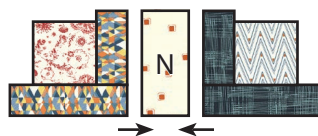


Make two.

Row Assembly:

Assemble one Half Color Welded Block, one Fabric N rectangle and one Half Blue Welded Block.

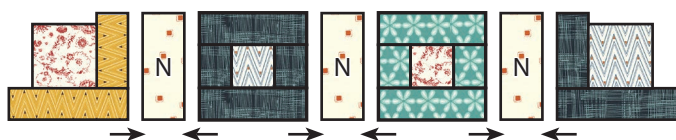
Make two Row Ones.



Make two.

Assemble one Half Color Welded Block, three Fabric N rectangles, one Blue Welded Block, one Color Welded Block and one Half Blue Welded Block.

Make one Row Two.



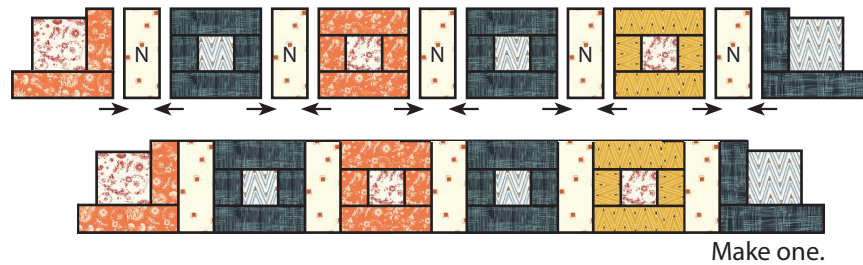
Make one.

Welded Quilt Pattern



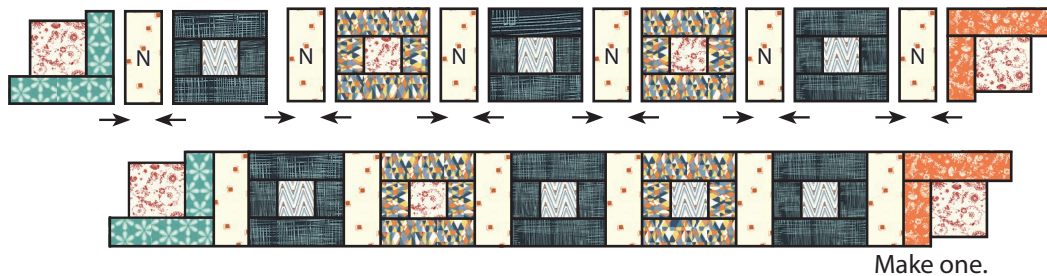
Assemble one Half Color Welded Block, five Fabric N rectangles, two Blue Welded Blocks, two Color Welded Blocks and one Half Blue Welded Block.

Make one Row Three.



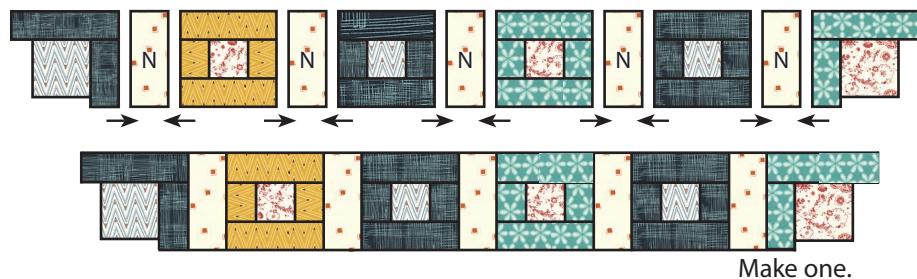
Assemble two Half Color Welded Blocks, six Fabric N rectangles, three Blue Welded Blocks, and two Color Welded Blocks.

Make one Row Four.



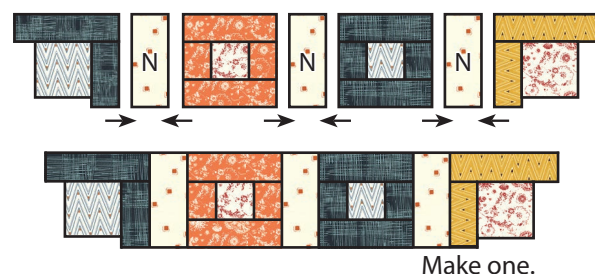
Assemble one Half Blue Welded Block, five Fabric N rectangles, two Color Welded Blocks, two Blue Welded Blocks and one Half Color Welded Block.

Make one Row Five.



Assemble one Half Blue Welded Block, three Fabric N rectangles, one Color Welded Block, one Blue Welded Block and one Half Color Welded Block.

Make one Row Six.



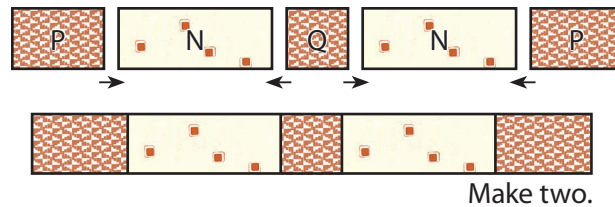
Welded Quilt Pattern



Assemble two Fabric P rectangles, two Fabric N rectangles and one Fabric Q square.

Sashing Row One should measure 4 1/2" x 36 1/2".

Make two.

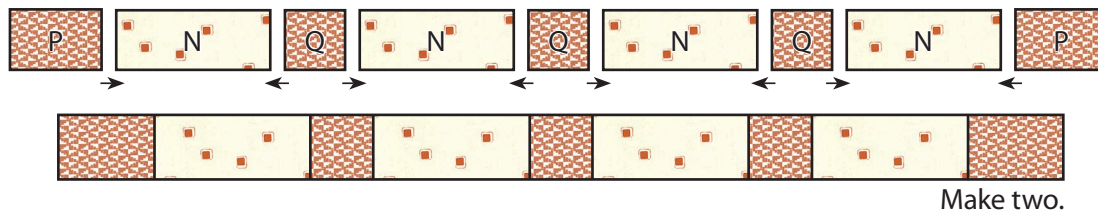


Make two.

Assemble two Fabric P rectangles, four Fabric N rectangles and three Fabric Q squares.

Sashing Row Two should measure 4 1/2" x 64 1/2".

Make two.

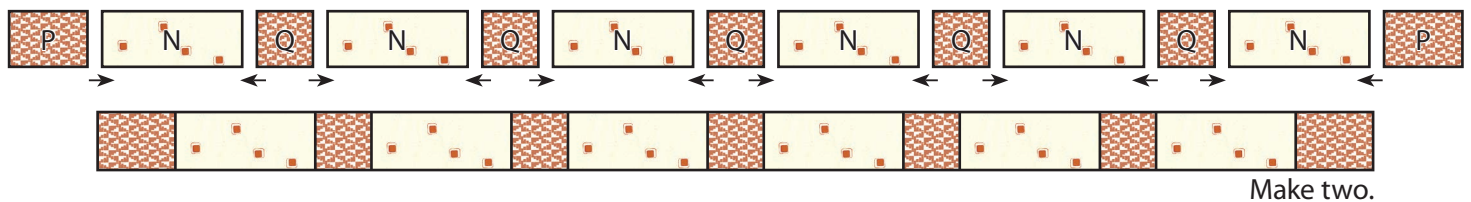


Make two.

Assemble two Fabric P rectangles, six Fabric N rectangles and five Fabric Q squares.

Sashing Row Three should measure 4 1/2" x 92 1/2".

Make two.



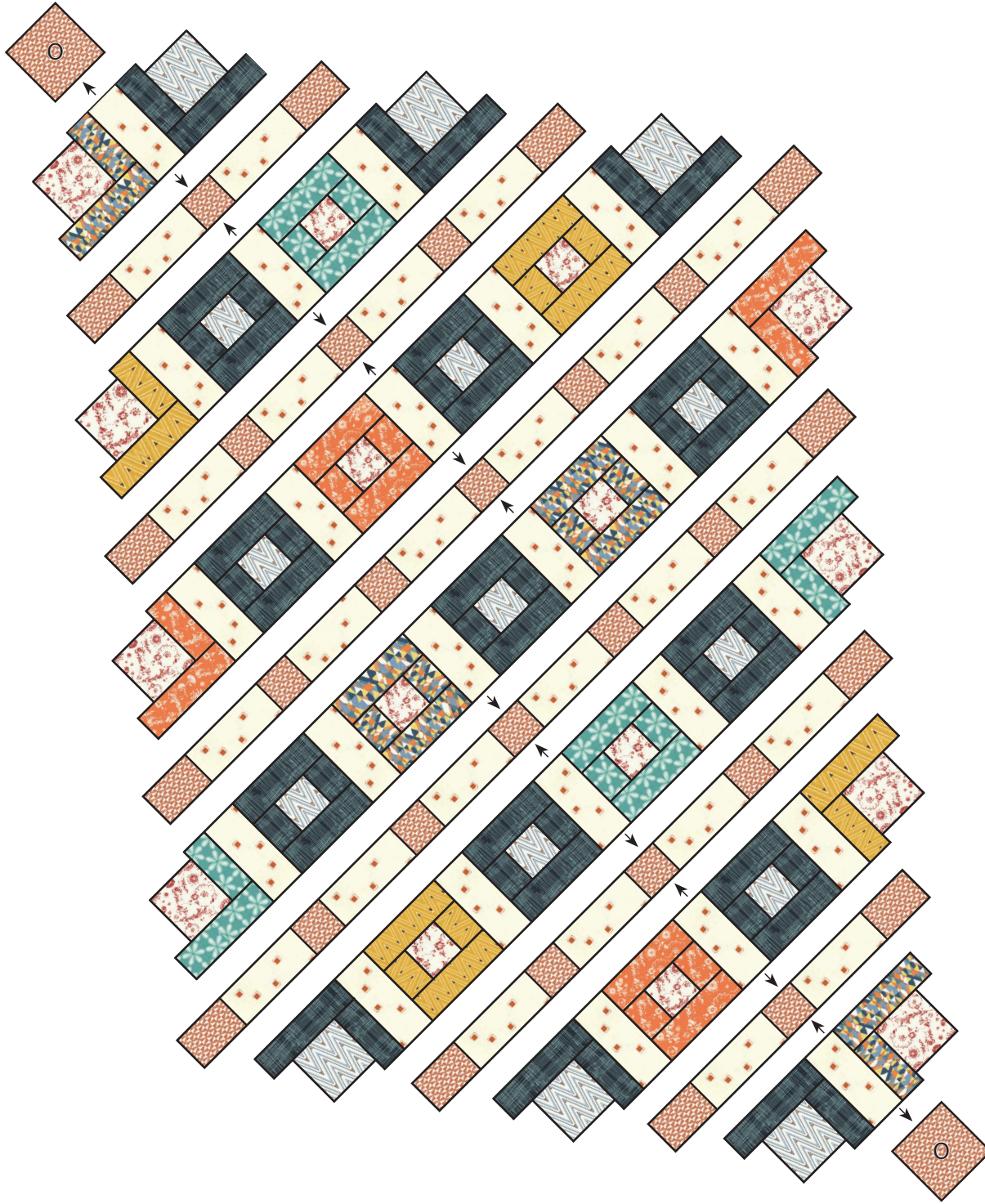
Make two.

Welded Quilt Pattern



Quilt Center:

Assemble the Quilt Center.



Welded Quilt Pattern



Trim sides of the Quilt Center $\frac{1}{4}$ " outside the seam intersections of the end blocks.

Quilt Center should measure 61" x 79 $\frac{1}{2}$ ".



Finishing:

Piece the Fabric E strips end to end for binding.

Quilt and bind as desired.



Copyright 2015 Fat Quarter Shop, LLC. All rights reserved. Duplication of any kind is prohibited.

This pattern may be used for personal purposes only and may not be reproduced without the express written permission from the Fat Quarter Shop.

These patterns may not be used for commercial purposes.