

Gallery of Stars

Designed by Kimberly Jolly for It's Sew Emma
Featuring the Greatest Hits collection by Nancy Gere
Finished Quilt Size: 83 1/2" x 106"



Check www.windhamfabrics.com Free Project section to see if there are any pattern updates before you start your quilt

WINDHAM *W* **FABRICS**

812 Jersey Ave ~ Jersey City, NJ 07310 ~ 201.659.0444 ~ FAX: 201.659.9719
www.windhamfabrics.com email: retail@windhamfabrics.com

Gallery of Stars

Designed by Kimberly Jolly for It's Sew Emma
Featuring the Greatest Hits collection by Nancy Gere
Finished Quilt Size: 83 1/2" x 106"

Fabric Image	SKU	Yardage	Description	Quantity & Size		
	27579-5	3 yards	Blocks, Sashing and Inner Border	A	48	3" x 5 1/2" rectangles
				B	48	3" squares
				C	17	3" x 20 1/2" rectangles
				D	9	3" x Width of Fabric strips
	23995-1	1/3 yard	Blocks	E1	6	5 1/2" squares
	23995-2	1/3 yard	Blocks	E2	6	5 1/2" squares
	27329-5	7/8 yard	Blocks	F	96	3" squares
	26824-2	5/8 yard	Blocks	G1	24	3 3/8" squares
				H1	24	3" squares
	30763-1	5/8 yard	Blocks	G2	24	3 3/8" squares
				H2	24	3" squares
	20792-Navy	5/8 yard	Blocks	I1	48	3 3/8" squares
	23994-2	5/8 yard	Blocks	I2	48	3 3/8" squares
	27723-1	7/8 yard	Blocks	J1	24	5 7/8" squares
	30765-3	7/8 yard	Blocks	J2	24	5 7/8" squares
	27721-4	1 yard	Blocks	K1	48	3 3/8" squares
				L1	24	3 3/8" squares
				M1	24	3" squares
	27721-6	1 yard	Blocks	K2	48	3 3/8" squares
				L2	24	3 3/8" squares
				M2	24	3" squares
	30762-3	3 1/4 yards	Cornerstones, Outer Border and Binding	N	6	3" squares
				O	10	7" x Width of Fabric strips
				P	11	2 1/2" x Width of Fabric strips
	30765-3	7 7/8 yards	Backing			

Gallery of Stars

Page 2

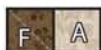
Use 1/4" seams and press as arrows indicate throughout.

Star Blocks:

Draw a diagonal line on the wrong side of the Fabric F squares.

With right sides facing, layer a Fabric F square on one end of a Fabric A rectangle.

Stitch on the drawn line and trim 1/4" away from the seam.



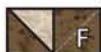
Make 48.

Repeat on the opposite end of the Fabric A rectangle.

Flying Geese Unit should measure 3" x 5 1/2".

Repeat forty-seven more times.

Make forty-eight.



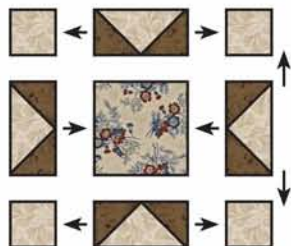
Make 48.

Assemble four Fabric B squares, four Flying Geese Units and one Fabric E square as shown.

Star Block Unit should measure 10 1/2" x 10 1/2".

Make six from Fabric E1 and six from Fabric E2.

Make twelve total.



Make six.



Make six.

Draw a diagonal line on the wrong side of the Fabric K squares.

With right sides facing, layer a Fabric K square with a Fabric I square.

Stitch 1/4" from each side of the drawn line.

Cut apart on the marked line.

Half Square Triangle Unit should measure 3" x 3".

Make ninety-six from Fabric K1/I1 and ninety-six from Fabric K2/I2.

Make 192 total.



Make 96.



Make 96.

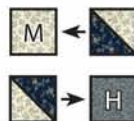
Assemble one Fabric M square, two matching Half Square Triangle Units and one Fabric H square as shown.

Refer to quilt layout for fabric placement.

Unit should measure 5 1/2" x 5 1/2".

Make twenty-four from each fabric set.

Make forty-eight total.



Make 24.



Make 24.

Cut Fabric G, Fabric J and Fabric L squares on the diagonal once.



Make 48.



Make 48.



Make 48.



Make 48.



Make 48.



Make 48.

Gallery of Stars

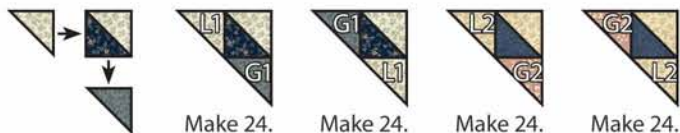
Page 3

Assemble one Fabric L triangle, one Half Square Triangle Unit and one Fabric G triangle as shown.

Pay close attention to fabric placement.

Make 24 from each fabric set.

Make 96 total.



Assemble unit as shown.

Left Triangle Unit should measure $5\frac{1}{2}'' \times 5\frac{1}{2}''$.

Make twenty-four from each fabric set.

Make forty-eight total.



Assemble unit as shown.

Right Triangle Unit should measure $5\frac{1}{2}'' \times 5\frac{1}{2}''$.

Make twenty-four from each fabric set.

Make forty-eight total.

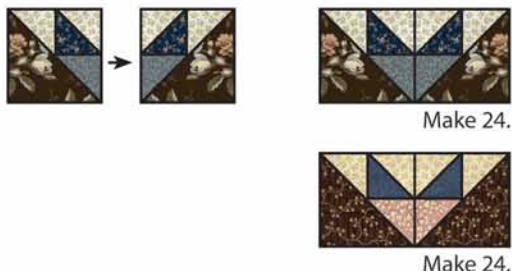


Assemble one Left Triangle Unit and one matching Right Triangle Unit as shown.

Unit should measure $5\frac{1}{2}'' \times 10\frac{1}{2}''$.

Make twenty-four from each fabric set.

Make forty-eight total.

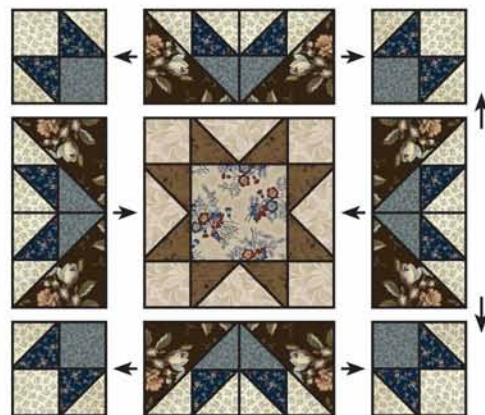


Assemble Star Block as shown.

Star Block should measure $20\frac{1}{2}'' \times 20\frac{1}{2}''$.

Make six Star Block Ones and six Star Block Twos.

Make twelve total.



Star Block One



Make six.

Star Block Two



Make six.

Gallery of Stars

Page 4

Quilt Rows:

Assemble Quilt Rows as shown.

Quilt Row should measure 20 1/2" x 65 1/2".

Make four total.

Quilt Row One

Uses two Star Block Ones and one Star Block Two



Make two.

Quilt Row Two

Uses two Star Block Twos and one Star Block One



Make two.

Assemble Sashing Rows as shown.

Sashing Row should measure 3" x 65 1/2".

Repeat two more times.

Make three.



Make three.

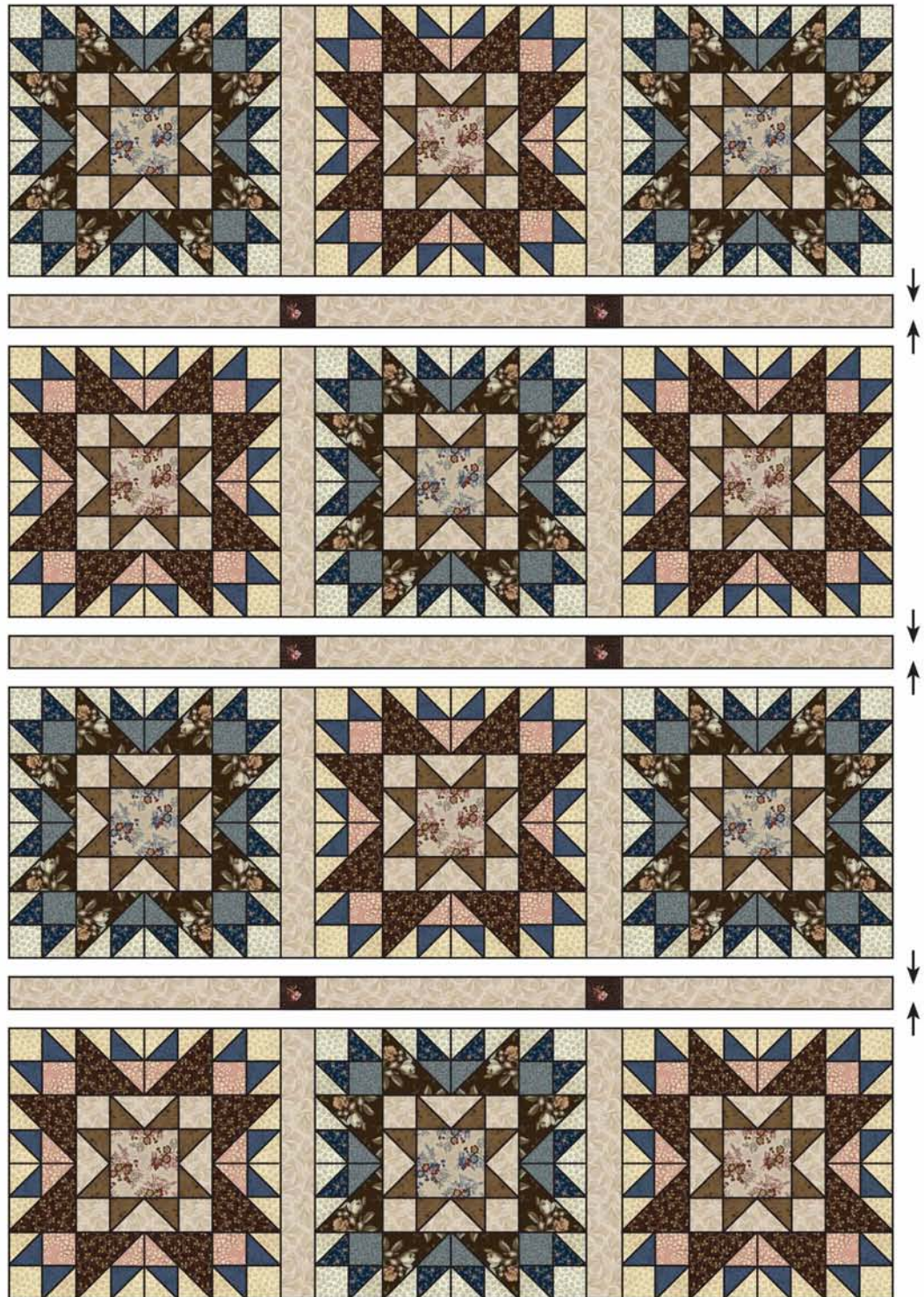
Gallery of Stars

Page 5

Quilt Center:

Assemble Quilt Center as shown.

Quilt Center should measure 65 1/2" x 88".



Gallery of Stars

Page 6

Inner Borders:

Piece 3" Fabric D strips end to end.

Subcut into two 3" x 88" strips (side inner borders) and two 3" x 70 1/2" strips (top and bottom inner borders).

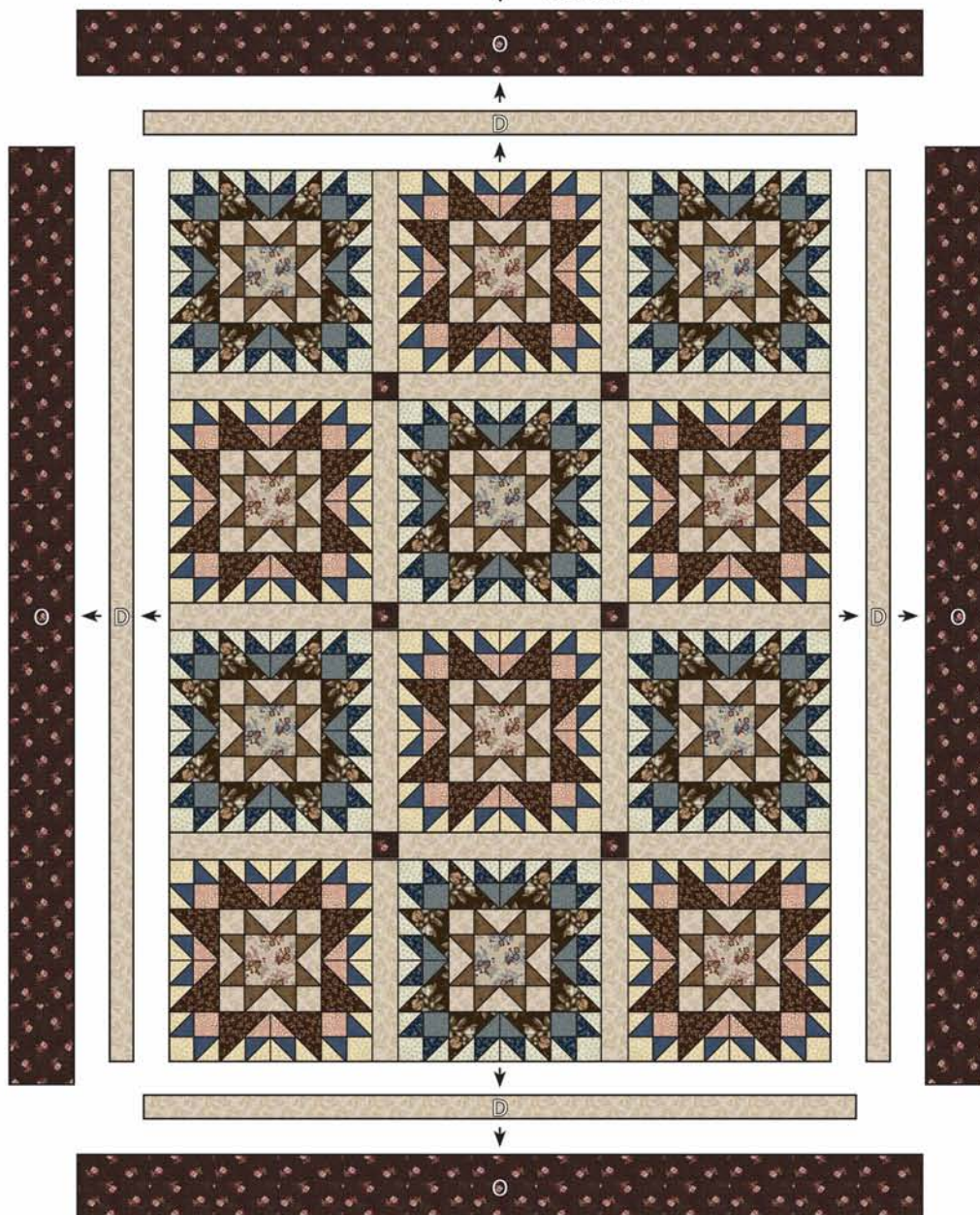
Attach side inner borders. Attach top and bottom inner borders.

Outer Borders:

Piece 7" Fabric O strips end to end.

Subcut into two 7" x 93" strips (side outer borders) and two 7" x 83 1/2" strips (top and bottom outer borders).

Attach side outer borders. Attach top and bottom outer borders.



Finishing:

Piece Fabric P strips end to end for binding. Quilt and bind as desired.

**For Questions about this quilt, contact Kimberly Jolly at: kimberly@itssewemma.com
And see other patterns she has created at: www.itssewemma.com**

Be sure to visit www.windhamfabrics.com to see the complete collection
and to download other Free Projects

WINDHAM FABRICS