

# Heart Mug Rug Pattern

[www.FatQuarterShop.com](http://www.FatQuarterShop.com)



Finished size: 8 1/2" x 8 1/2"

Fabric	Yardage	Description	Quantity & Size	
White Cherry Print	10" square	Background	A	1: 8 1/2" square
Pink Tonal Dots	10" square	Large Heart Applique	B	Cut applique piece (see page two)
Red Floral Print	10" square	Small Heart Applique	C	Cut applique piece (see page two)
Red and White Dots	10" square	Cherry Applique	D	Cut applique piece (see page two)
Red and White Check	1/8 yard	Binding	E	1: 2 1/2" x Width of Fabric strip
Pink Floral Print	10" square	Backing	1: 8 1/2" square	

## Additional Supplies:

Olfa Decorative 45mm Scallop & Peak Rotary Blade Olfa #SCB45-1

Fusible Web for applique

Green Embroidery Floss

9" square Batting



**Free quilt pattern by Debbie Taylor**

Copyright 2013 Fat Quarter Shop, LLC. All rights reserved. Duplication of any kind is prohibited.

This pattern may be used for personal purposes only and may not be reproduced without the express written permission from the Fat Quarter Shop. These patterns may not be used for commercial purposes.

# Heart Mug Rug Pattern

Use ¼" seams and press as arrows indicate throughout.

## Applique:

Using the Olfa scallop & peak rotary blade cut the large heart applique piece from the Fabric B square.

Cut one small heart applique piece from Fabric C.

Cut two cherry applique pieces from Fabric D.

Using the 8 ½" Fabric A square, prepare the applique pieces using your preferred method of applique.

Reference the Applique Placement Guide on page three.

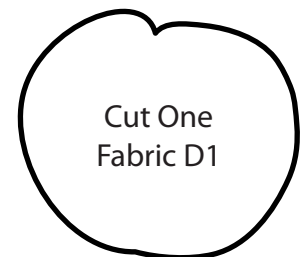
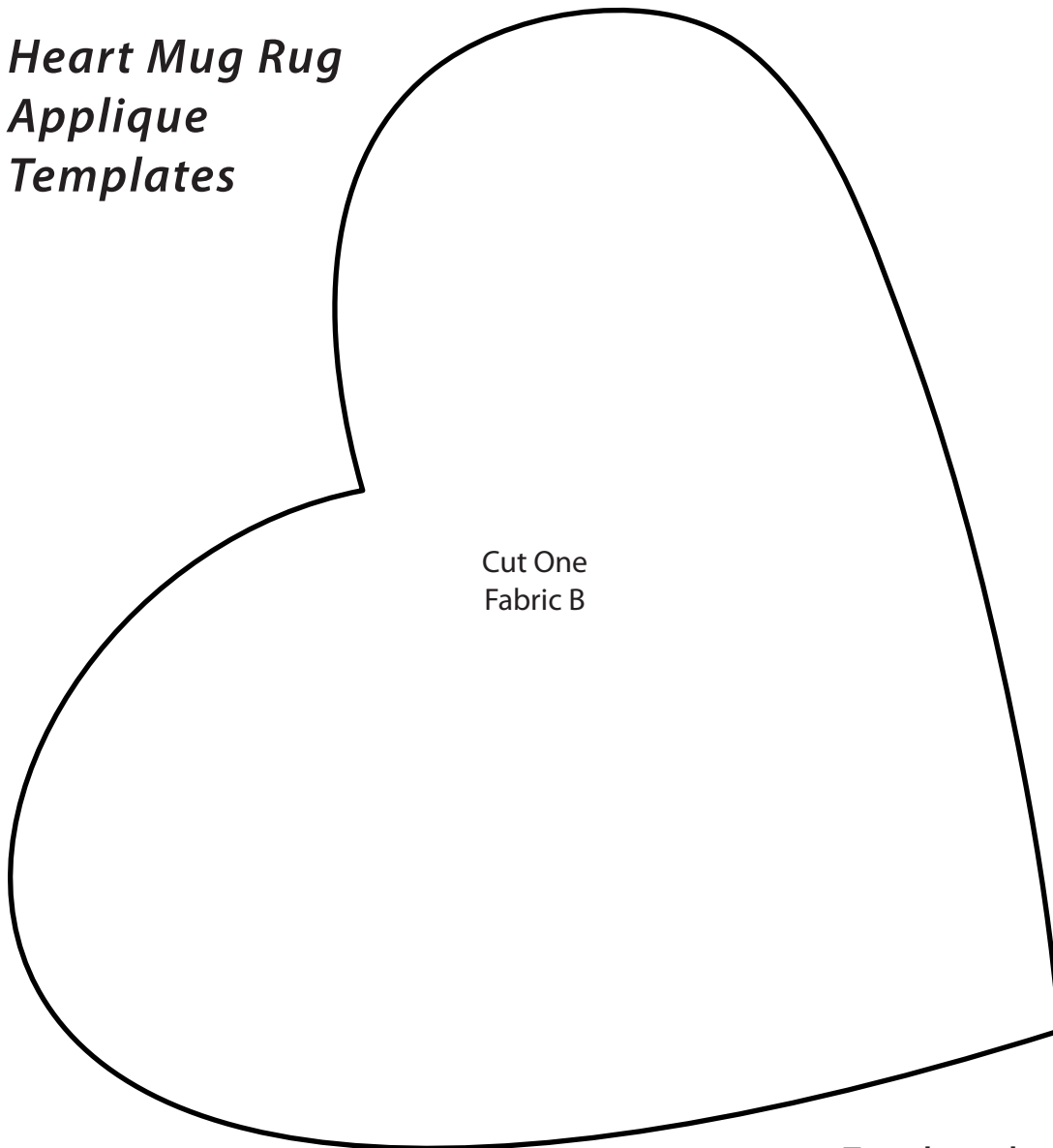
Using the green embroidery floss sew cherry stems on the Fabric A square, as shown in the Applique placement guide.

---

## Finishing:

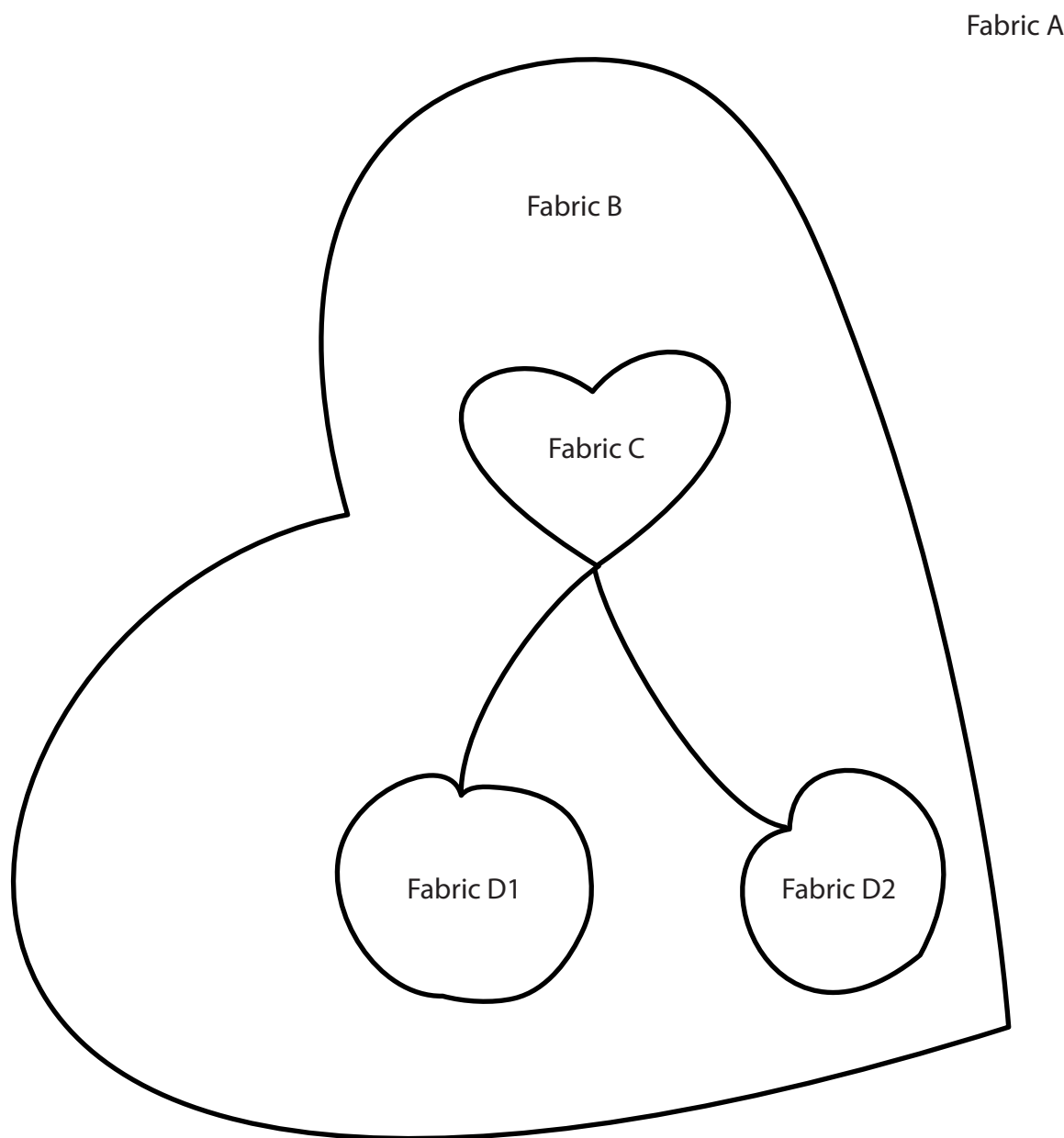
Quilt and bind as desired.

## Heart Mug Rug Applique Templates



Templates are actual size.  
Templates do not include seam allowance.

# Heart Mug Rug Pattern



## Applique Placement Guide